



1
BEDROOMS

HIDDEN LANE NEXT TO DOWNTOWN

1067 Robertson Road, Glen Ellen, CA, 95442

SHONE GROUP REAL ESTATE
wine country expertise 1980–now

1
FULL BATHROOMS

\$899,000

Hidden downtown amidst 1/2± acre of mature landscape and gorgeous trees aside Sonoma Creek. Includes a 1 bedroom, 1 bath custom cottage with skylights and vintage touches such as reclaimed glass pocket doors, stained glass and wood windows overlooking the creek and grounds. Entertain at the private pool terrace with spa and cabana. Charming facade of detached garage with large shop and plans for a second unit above. For guests a 1 room studio also overlooks the creek. Just around the corner from town the spacious parcel has public utilities and is accessed via a circular driveway. Enchanting escape just down the street from Jack London State Park, 1± hour from San Francisco.

.55
± ACRE(S)

GlenEllenHideaway.com

Tina Shone

Tina@ShoneGroup.com

707.799.7556 | DRE# 00787338

Sotheby's
INTERNATIONAL REALTY

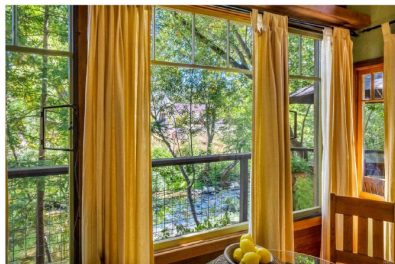
Sotheby's International Realty - Wine Country – Sonoma Brokerage

© 2023 Sotheby's International Realty. All Rights Reserved. Sotheby's International Realty® is a registered trademark and used with permission. Each Sotheby's International Realty office is independently owned and operated, except those operated by Sotheby's International Realty, Inc. All offerings are subject to errors, omissions, changes including price or withdrawal without notice. Equal Housing Opportunity. Tina Shone License# 00787338.

1067 Robertson Rd, Glen Ellen, CA 95442

N Active

\$899,000



[Additional Pictures](#) |

MLS #	323042427	List Price:	\$899,000
Beds:	1	Original Price:	\$899,000
Baths (F/P):	2(1/1)	Sold Price:	
Approximate SqFt:		Price per SqFt:	
SqFt Source:	Against Co. Policy	List Date:	
Lot Size:	0.5510 ac	DOM/CDOM:	
Year Built:		On-Market:	08/01/23
APN:	054-330-013-000	Closed:	
Unit/Block/Lot:		Contingent:	
Zoning:		Pending:	
Subtype / Description:	Single Family Residence		/ Detached

Public Remarks: Hidden downtown amidst 1/2+- acre of mature landscape and gorgeous trees aside Sonoma Creek. Includes a 1-bedroom, 1 bath custom cottage with skylights and vintage touches such as reclaimed glass pocket doors, stained glass and wood windows overlooking the creek and grounds. Entertain at the private pool terrace with spa and cabana. Charming facade of detached garage with large shop and plans for a second unit above. For guests a 1-room studio also overlooks the creek. Just around the corner from town the spacious parcel has public utilities and is accessed via a circular driveway. Enchanting escape just down the street from Jack London State Park, 1+- hour from San Francisco.

Property Features:

<p>Appliances: Double Oven,Free Standing Gas Oven,Free Standing Refrigerator,Gas Cook Top</p> <p>Bathroom Feat: Shower Stall(s),Skylight/Solar Tube,Tile</p> <p>Construction: Shingle Siding</p> <p>County: Sonoma</p> <p>Exterior:</p> <p>Flooring: Tile,Other</p> <p>Garage Space(s): 1</p> <p>Kitchen Features: Breakfast Area,Skylight(s),Slab Counter,Tile Counter</p> <p>Lot Features: Garden,Landscape Misc,Stream Year Round</p> <p>Master Bath Feat:</p> <p>Patio & Porch Feat: Covered Deck,Covered Patio,Uncovered Deck,Uncovered Patio</p> <p>Pool Type(s): Yes, Built-In,Heat None,Lap,Liner</p> <p>Security Features:</p> <p>Spa/HotTub: Yes, Spa/Hot Tub Personal</p> <p>Style: Cottage</p> <p>Views: Garden/Greenbelt,Water</p>	<p>Basement:</p> <p>Broker Co-op: 2.50</p> <p>Cooling: Ceiling Fan(s),Heat Pump,MultiUnits</p> <p>Dining Room: Dining Bar,Space in Kitchen</p> <p>Fireplace(s): 0,</p> <p>Foundation: Slab</p> <p>Heating: Heat Pump,MultiUnits,Other</p> <p>Laundry: Inside Room,Washer/Dryer Stacked Included</p> <p>Main Level Rooms: Bedroom(s),Family Room,Full Bath (s),Kitchen,Living Room,Primary Bedroom,Retreat</p> <p>Parking Features: Boat Storage,Covered,Detached,Guest Parking Available,RV Possible,Side-by-Side,Uncovered Parking Spaces 2+,Workshop in Garage</p> <p>Property Condition:</p> <p>Roofing: Composition,Other</p> <p>Senior: No</p> <p>Stories: 1</p> <p>Upper Level Rooms:</p> <p>Window Features:</p>
---------------------------------------------------------------------------------------------------------------------------------------------------------------------------------------------------------------------------------------------------------------------------------------------------------------------------------------------------------------------------------------------------------------------------------------------------------------------------------------------------------------------------------------------------------------------------------------------------------------------------------------------------------------------------------------------------------------------------------------------------------------------------------------------------------------------------------------------------------------------	-----------------------------------------------------------------------------------------------------------------------------------------------------------------------------------------------------------------------------------------------------------------------------------------------------------------------------------------------------------------------------------------------------------------------------------------------------------------------------------------------------------------------------------------------------------------------------------------------------------------------------------------------------------------------------------------------------------------------------------------------------------------------------------------------------------------------------------------

Presented by: Tina Shone CA DRE License #00787338, 707-933-1515
Sotheby's International Realty CA DRE License #00899496, 707-935-2288

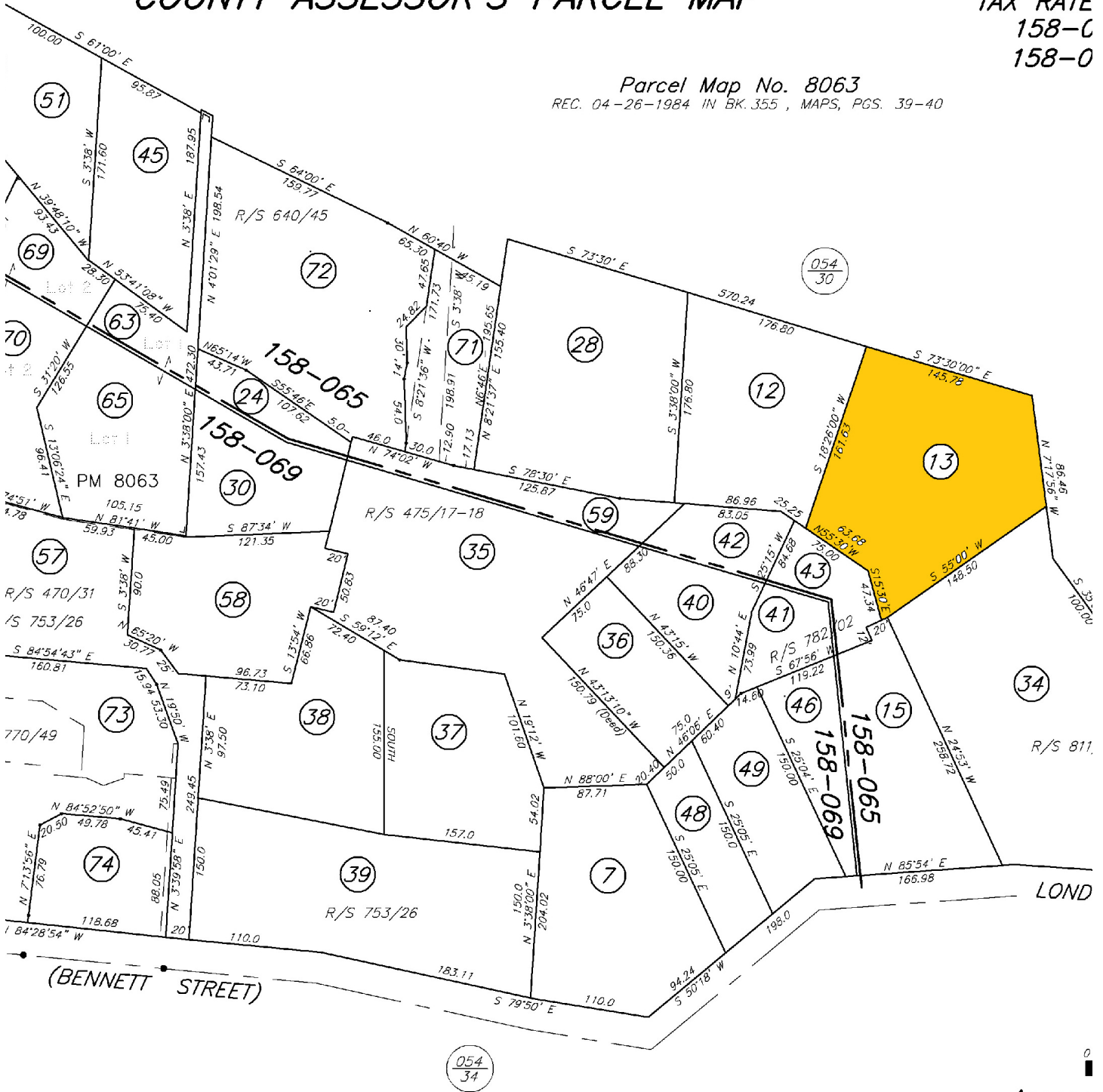
Featured properties may not be listed by the office/agent presenting this brochure. Information has not been verified, is not guaranteed, and is subject to change. [IDX_Disclaimer_2] [IDX_Disclaimer_3] (U.S. Patent 6,910,045)

COUNTY ASSESSOR'S PARCEL MAP

TAX RATE
158-C
158-O

Parcel Map No. 8063

REC. 04-26-1984 IN BK.355 , MAPS, PGS. 39-40



County Assessor for assessment purposes only and does not verify legal parcel status check with your city or county as assumed for the accuracy of the data delineated.

Assess
Sc